

COLLABORATIVE COLLISION @FSU



Health 2021

Presentation Order

1	Lara Perez-Felkner	16	Hannah Fazio	31	Adam (Dr. B) Baptiste
2	Qiong (Joanna) Wu	17	Gregg Stanwood	32	Beth Hodges
3	Colm Connolly	18	Sabrina Dickey		
4	Elizabeth Madden	19	Joseph Schwartz		
5	Debra Osborn	20	Monica Hurdal		
6	April Lovett	21	Barbara Parker-Bell		
7	Derrick Stephens	22	Eren Ozguven		
8	Lichun Li	23	Scott Pickett		
9	F. Andrew Kozel	24	Lucinda Graven		
10	Amy L. Ai	25	Patrick Merle		
11	Kevin Johnson	26	Hongyuan Cao		
12	Heather Flynn	27	Chao Huang		
13	Amy Kim	28	Krissy Capitano		
14	Meghan Mick	29	Leslie Beitsch		
15	Fengfeng Ke	30	Nicki Taylor		



Lara Perez-Felkner

Associate Professor of Higher Education
lperezfelkner@fsu.edu
<https://orcid.org/0000-0002-3451-8524>

My Interest in Health

Looking for funding/collaboration:

- Inequality in H.S. & College Students' Pathways Socioeconomic, Educational, and Health Outcomes
- Specifically: (1) Food, Housing, and Other Basic Needs Insecurity and (2) Mental Health, including Stress, Anxiety, Depression

Gender and Racial/Ethnic Disparities in STEM Postsecondary Experiences, Outcomes, and Careers for Students & Faculty

Research and Projects

[RESET – Research on Equity in Science, Engineering, and Technology](#) projects focus on how ability beliefs, active learning, mentoring and research opportunities, and supportive social contexts influence persistence toward STEM research careers, with a focus on broadening participation in science, engineering, and technology in higher education and postsecondary careers.

[HEPP – Higher Education Persistence Pathways](#) initiatives investigate the structures and supports which can foster postsecondary student success among underrepresented students, especially women, Black and Latino students, and low-income students who may also be the first-generation in their family to go to college. This research draws on sociological and life course frameworks to understand constraints and opportunities which can contribute to longer-term outcomes.

See also: <https://perezfelkner.com/>

Expertise/Interests

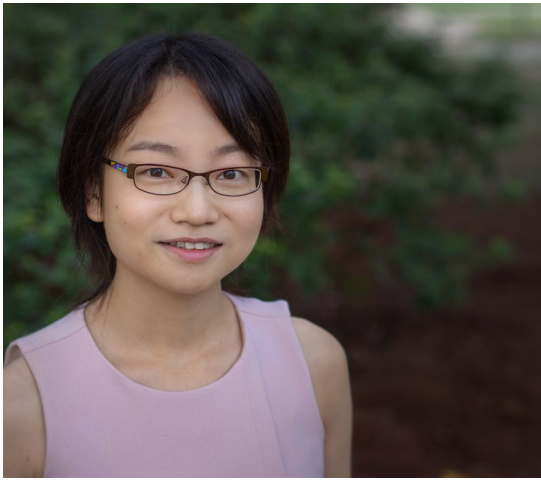
- Race-, class- and gender-based disparities in pathways to postsecondary education and careers
- Gender inequality in STEM
- Sociology of education, Human Development
- Experimental, survey, and mixed methods study design

How I Can Help You

- RCT experiments, mixed methods integration, and/or surveys
- Evaluation and educational research partnership on equity- and opportunity-expansion projects
- Collaborative interdisciplinary analysis & writing

How You Can Help Me

- Collaborate on research projects using experiments and surveys, and as a qualitative partner for mixed methods research
- Interdisciplinary partnerships around high school, community college, and community partner interventions



Qiong Wu

[Department of Family & Child Sciences](#)
qw3@fsu.edu

ORCID: 0000-0002-4812-1181

My Interest in Health

- My research interests focus on emotional processes within the family and their role in the intergenerational transmission of psychopathologies from parents to children.
- I have primarily invested my research in examining how maternal mental health problems (depression, anxiety, and substance use) are associated with adjustment issues in children through mother-child emotional dynamics.
- As an applied researcher and clinician, I am also interested in examining the efficacy of family therapy interventions aimed at improving parent-child emotional interactions.

Research and Projects

- Understanding children’s self-regulation development in low-income families
- Understanding the transmission process of maternal depression to her children
- Clinical research in family therapy

Expertise/Interests

- Developmental Psychopathology
- Marriage and Family Therapy
- Quantitative Research Methodology

How I Can Help You

- Knowledge on child development, parenting, and developmental psychopathology
- Statistical modeling and consulting
- Clinical experiences with families and children

How You Can Help Me

- Grant writing
- Connection to local clinical populations
- Or let me help you!





My Interest in Health

- Using MRI to explore the neurobiology of psychological processes
- Dysfunction of psychological processes, e.g., cognitive control and reward processing, in mood and substance abuse disorders
- Metabolic disorders, such as diabetes, and its impact on brain structure and function
- Connecting with other individuals at FSU who are interested in using MRI to investigate the neuroscience of human function and dysfunction.

Colm G. Connolly

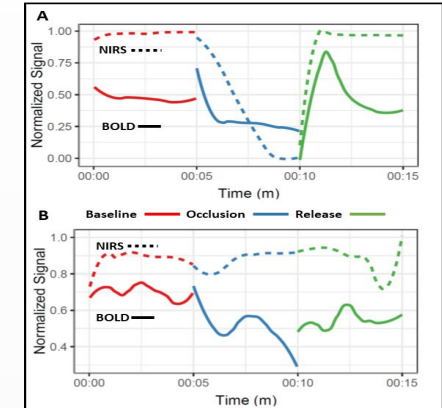
Magnetic Resonance Imaging Facility

cconnolly@fsu.edu

[ResearchGate Profile](#)

Research and Projects

Do Muscle Stretching and Creatine Supplementation Improve Muscle Function in Older Adults with Peripheral Artery Disease?
PI: Judy Delp (Biomedical Sciences)



Effects of Dapagliflozin +/- Saxagliptin treatment-induced reduction of circulating blood glucose level on brain and cognitive functioning in individuals with type 2 diabetes mellitus. PI: Pascal Jean-Pierre (BSSM)



Figure 2b. Left to right: L DLPFC and parietal cortex (PAR), R DLPFC and PAR, anterior insula, bilateral PAR.

Expertise/Interests

- Functional/Structural MRI
- Cognitive Control
- Mood Disorders
- Substance Abuse
- Cognitive Neuroscience

How I Can Help You

- Design and analysis of functional and structural MRI experiments
- Implementing tasks for use in the MRI scanner
- Training and mentoring of faculty and students in conduct of MRI-based experiments
- Paper and grant writing.

How You Can Help Me

- Access to subject pools
- Collaborate to develop MRI-based research programs
- Allow me to help you!

All Research Profiles Available at:
[research.fsu.edu/Collaborative Collision](http://research.fsu.edu/Collaborative%20Collision)

Up Next: Elizabeth Madden



Elizabeth Madden

Communication Science & Disorders

ebmadden@fsu.edu

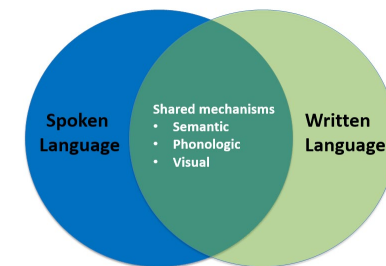
<https://aphasialab.cci.fsu.edu/>

My Interest in Health

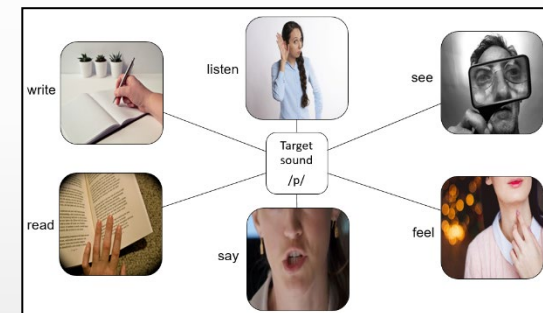
- Improving **language recovery** (talking, understanding, reading, writing) for individuals with stroke and aphasia
- Understanding impact of stroke and brain injury on **social networks** for the person with aphasia and their caregivers and friends
- Examining **effect of exercise on language outcomes** for stroke and aphasia survivors

Research and Projects

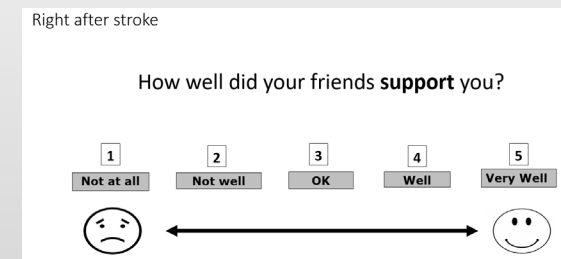
- **FSU Aphasia Registry & Repository**
- **Language processing in aphasia**



- **Written language treatment for aphasia**



- **Friendship and aphasia**



Expertise/Interests

- Speech-language pathology
- Aphasia (acquired language disorder)
- Language recovery after stroke or brain injury

How I Can Help You

- Collaborating on projects focused on:
 - Rehabilitation for individuals with neurological injury or disease
 - Caregivers of adults with acquired communication disorders
- Recruiting participants with aphasia

How You Can Help Me

- Assist with quantitative and qualitative data analysis
- Work together to bridge our related interests
- Identify and pursue grant opportunities



Deb Osborn

Professor,

Educational Psychology & Learning Systems

dosborn@fsu.edu

<https://education.fsu.edu/deb-osborn>

My Interest in Health

- Exploring the connection between career and mental health
- Establishing innovative, evidence-based career interventions
- Interested in how technology can support career and mental health well-being
- Extending understandings of positive mental health attributes, e.g., resiliency for career development
- Creative approaches to support career decision-making and problem-solving

Research and Projects



I co-direct the Center for the Study of Technology in Counseling & Career Development at the FSU Career Center, and a career development & technology research team of faculty/doc students.

Learn more about our work:



Expertise/Interests

- Career development theory
- Career interventions
- Career assessments
- ...with different populations

How I Can Help You

- Career counseling/vocational psychology knowledge
- Career theory-based assessments and interventions
- Interested in applied research
- Interest in/passion for collaborative projects

How You Can Help Me

- Expanding beyond college students
- Unexplored topics that might relate to career/mental health
- Application of Technologies
- Grantwriting
- Interest in exploring unique, mutually beneficial, creative partnerships

Current research team projects:

- Virtual Career Card Sort
- Virtual Vocational Meaning & Fulfillment Surveys
- Pearls of Perfection (high school career intervention)
- Career Outcome Metacognition Survey

Recent Publications:

- Expectations, experiences and career-related outcomes of computer-assisted career guidance systems. *Journal of Employment Counseling*
- Cognitive Information Processing Theory: International Applications. *Career Planning Adult Development Journal*,



April Lovett

Health Data Sciences Initiative
FSU Libraries – Health Data Programs
april.Lovett@fsu.edu

Expertise/Interests

- Project Management/Organization
- General/Business Data Analysis & Data Reporting
- Data Visualization: Power BI

My Interest in Health

- Working with the FSU team to establish the Health Data Sciences Initiative: healthdata.fsu.edu
- Learning about various health research happening at FSU and the resources and support needed
- Learning how to support big health data and streaming health data
- Learning principles of data harmonization in order to create consistency in variables across disparate data sets

How I Can Help You

- Connect you to existing research and data management/data literacy programs
- Understand research resources & support needed and take them back to larger decision-making groups

How You Can Help Me

- As a research stakeholder, help me understand the resources and support you need to successfully work with health data (both small and large) at FSU.
- Alert me of resources/support you are currently outsourcing as part of your research projects/grant-mandates.

Research and Projects

HEALTH DATA AT FLORIDA STATE



FSU is taking bold steps to establish and grow Big Data expertise and capacity in the biological, social, and health sciences. This site is dedicated to that effort.

What are the health research resources/support you need and want?

Research Data Services



FSU Libraries provides research data services to support and collaborate with scholars in areas related to **data analysis & visualization, digital humanities, GIS, and research data management**. Need help finding a dataset? Want help making a map or creating a data visualization? Need to create a data management plan and don't know where to start? We're here to help!

- **Data Skills Acquisition**
- **Data Management Consultations**
- **Databases**
- **Publication Information/Assistance**
- **Data Privacy & Copyright**

Up Next: Derrick Stephens



Derrick Stephens, MBA, LCSW

Center for Behavioral Health Integration
Research Faculty
dstephens@fsu.edu

<https://www.linkedin.com/in/derrick-stephens-mba-lcsw-77427628/>

Expertise/Interests

- Foster Care / Child Welfare
- Health Care / Mental Health
- Substance Use Disorder
- Long-Term Care /Residential
- Entrepreneurship
- Leadership Development
- Virtual / Augmented Reality & AI

My Interest in Health

- Exploring ways brain science, innovation and technology can significantly impact the physical, mental and social- emotional health of youth that have experienced significant trauma and stress.
- Connect with other individuals at FSU that are interested in prevention and resiliency to combat the negative effects of Adverse Childhood Experiences
- Mental Health and Substance Abuse Disorder
- Connecting with teams and individuals currently working with virtual and augmented reality.
- Identify and build a collaborative research team to identify and compete for state, federal and foundation funding.

How I Can Help You

- Access to Lived and Living Experience Children, Families and Child Welfare Workers, Substance Abuse Disorder
- Program Development and Implementation – Futuring / Visioning /
- Team Development – How to work with people
- 10+ Sales and contract negotiation (medical device, telemedicine, healthcare)
- Previously Funded by Robert Wood Johnson Foundation
- Coaching and Mentoring

How You Can Help Me

- Open to brainstorming potential research collaboration opportunities.
- Assistance with connecting with faculty and staff working with virtual/augmented reality and AI... Foster Care / Child Welfare.....Trauma, Stress
- Publishing
- Apply for a grant
- Publishing

Research and Projects



Principal Investigator for DCF Central Region offering behavioral health training , consulting and executive coaching through sponsored projects.

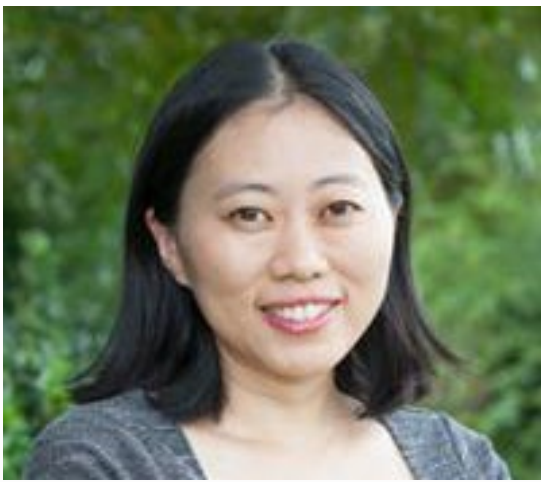


Robert Wood Johnson Foundation Clinical Scholar:
Project Director for Underdog Dream: Improving Long-Term Quality of Life Outcomes for Florida's Foster Youth and Families.

Recent Proposals/Publications:

- Florida Department of Children's and Families 2019/2020 Gap Analysis Report
- Toolkit for Improving Long-term Quality of Life Outcomes for Foster Youth and Families

Up Next:



Lichun Li

Industrial and Manufacturing Engineering
lichunli@eng.famu.fsu.edu
<https://orcid.org/0000-0002-6698-4271>

Expertise/Interests

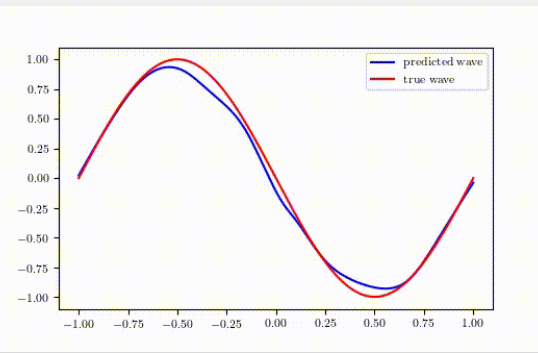
- Artificial Intelligence in dynamic systems
- Dynamic system modeling and control
- Dynamic games
- Discrete event systems

My Interest in Health

- Health systems that evolve over time with fully or partially known rules
- Predict long term behavior based on short term observation if the dominant rule is similar.
- Predict behavior under never-seen concisions based on previous observation if the dominant rule is similar
- Predict system behavior when new conditioning factors begin to influence the system.

How I Can Help You

- Provide time dependent simulation like below.

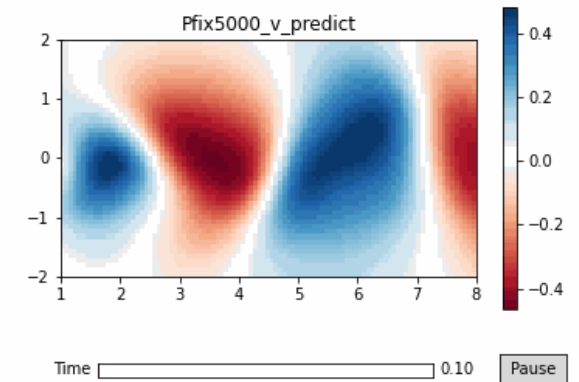
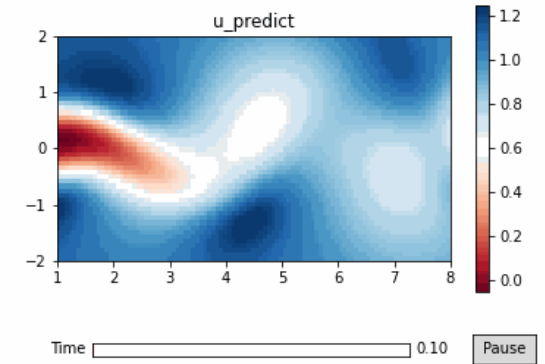


How You Can Help Me

- You precious data and deep understanding about the climate topic can help us refine our idea about physics informed deep learning method.

Research and Projects

- Fast prediction of Navier-Stokes equation with only initial/boundary condition and 1% of data of the first 10 seconds





F. Andy Kozel, MD MSCR

FSU Neuromodulation Laboratory
FSU BehavioralHealth™ at Apalachee Center
FSU Mood and Anxiety Center of Excellence

fkoz@fsu.edu

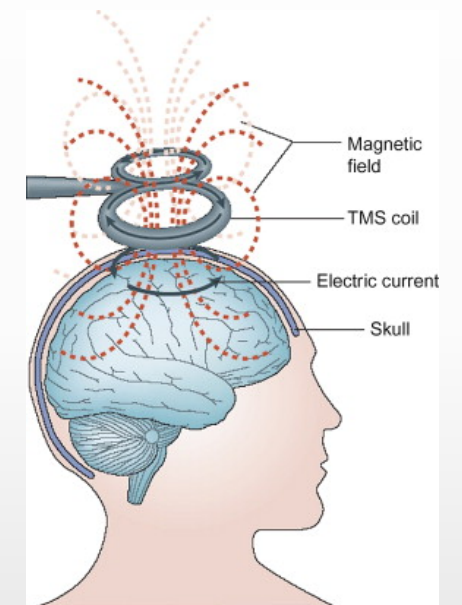
Intro: [Mina Jo Powell Chair, Neurological Sciences](#)

My Interest in Health

- Overall interest in brain stimulation to better understand and treat neuropsychiatric disorders.
- Combining therapies to improve patient outcomes (e.g. psychotherapy, music therapy, art therapy).
- Personalization of therapies using neuroimaging and biomarkers.
- Connecting with other individuals at FSU who are interested mental health research, treatment, and education.

Research and Projects

- 1) **PTSD: Treatment with Transcranial Magnetic Stimulation (TMS) and Cognitive Processing Therapy (CPT)**



- 2) **Accelerated TMS (2 weeks vs. 6 weeks)**

Expertise/Interests

- Adult Psychiatry
- Depression, PTSD, Anxiety
- Brain Stimulation
- Neuroimaging
- Clinical Research

How I Can Help You

- Advise on clinical research with human participants
- Access to brain stimulation and neuronavigation equipment
- Share resources and experience for mental health research

How You Can Help Me

- Recruitment (PTSD and new populations)
- New technologies and ideas
- Adjacent expertise (e.g. sleep, physical activity, media)
- Funding
- Smart and creative people interested in mental health



Amy L Ai

College of Social Work
aai@fsu.edu

orcid.org/0000-0003-1653-0164

My Interest in Health

- Exploring individual strength and protective factors to enhance disease- and pandemic-related outcomes
- Investigating gender/sex differences (e.g., biological, physical, psychosocial, and spiritual) in diseases
- Understanding the complicated relationship among factors in different disciplines and their role in cardiac survival
- Revealing the mechanism underlying the role of risk and protective factors in the outcome of patients
- Examining various types of wellbeing and traumatic impacts

Research and Projects



- Principal Investigator (PI) — *The Role of Psychological Strength Factors on Long-term Survival of Older Adults with Advanced Heart Diseases & Gender Differences (20-years follow-up)* funded by the National Institute on Health.
- Consultant — *Psychosocial Impact of Lock down during the Covid-19 pandemic* (an international survey, PI: Anna Kotic, PhD, Univ. of Rome, Italy)

Recent Proposals/Publications:

- **Ai, L. A.**, & Smyth, S. (2021). Depression after open-heart surgery: Influence of optimism, gender, and event-related medical factors. *Journal of Nervous and Mental Disease*, 209(3), 212-217.
- **Ai, L. A.**, & Carretta, H. (2020). Depression in patients with heart diseases: Gender differences and association of comorbidities, optimism, and spiritual struggle. *International Journal of Behavioral Medicine*, (27), -.
- **Ai, L. A.**, & Carretta, H. (2020). Optimism/hope related to low anxiety in patients with advanced heart disease controlling for standardized cardiac confounders. *Journal of Health Psychology*, 25(13-14) 2520 –2527.
- **Ai, A. L.**, Lee, K., & Kabbie, M. (2014). Body affects mind? Preoperative biological predictors for postoperative psychiatric symptoms in cardiac patients. *Journal of Behavioral Medicine*, 37(1), 127-134.

Expertise/Interests

- Cardiac diseases
- Sex and age differences
- Diseases’ mental health comorbidities
- Psychosocial Impacts of pandemics and disasters

How I Can Help You

- Interdisciplinary research on disease and pandemic impacts
- Clinical studies on patients
- Risk factors in physical and mental health on outcomes
- Influences of human strength factors on health outcomes
- Prospective design

How You Can Help Me

- Biomarkers in diseases
- Biostatistics
- Statistical modeling
- Collaboration on publications and disseminations
- Creative projects with multidisciplinary expertise such as your basic sciences



Kevin Johnson, PhD RN

FSU Neuromodulation Laboratory
kjohnson21@fsu.edu

<https://www.linkedin.com/in/kevinajohnsonphd/>

My Interest in Health

- Translate neuroscience and behavioral research into useful therapies.
- Development of self-care products (e.g. take-home or wearable devices) for mental health and pain management.
- Matching new technologies to unmet needs.
- Helping others refine ideas and figure out how to move forward.

Research and Projects

Home Use / Self-Care Devices for Dysphoria (Mood Disorders & Pain)

- Developing protocol for quick screen of possible solutions.
- Reviewing electrical stimulation devices.
- Reviewing sensory-based devices.

Expertise/Interests

- Medical Product Development
- Pain, Depression
- Brain Stimulation
- Sensory Perception
- Clinical Research

How I Can Help You

- Experience developing products from concept, through phases of development, to commercialization.
- Experience with technology in clinical research.

How You Can Help Me

- Interesting and creative ideas.
- Experience with engineering prototyping (electrical engineering, mechanical engineering).
- Experience with technology and media (music engineering, VR/AR programming).
- Expertise in sensory sciences.





Heather Flynn, PhD

Professor and Interim Chair, Behavioral Sciences and Social Medicine, College of Medicine

My Interest in Health

- Working with communities, agencies and organizations to integrate mental health and substance use treatment
- Health services and treatment research aimed at improving perinatal and maternal behavioral health outcomes
- Behavioral Health integration in primary care, including obstetrics and pediatrics
- Behavioral health data integration

Research and Projects

- *Implementation of Pediatric Behavioral Health Integration*
- *Maternal Behavioral Health Integration in obstetrics*
- *Psychological and Medical Factors in Pain and Opioid Use in Orthopedic Practice*

Expertise/Interests

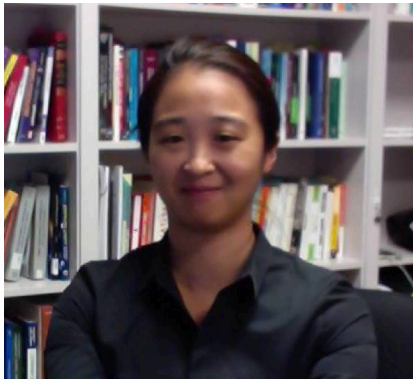
- Mental Health Engagement and Treatment
- Perinatal Behavioral Health
- Community Partnerships

How I Can Help You

- Liaison with mental health entities in the community and nationally
- Mental health related research questions and projects
- Maternal-Child related research
- Training in psychiatric treatment

How You Can Help Me

- Linkage with biostatistics faculty
- Connection with obstetrics practices



Amy Kim

Associate Professor

Dept. of Sport Management

kamy@fsu.edu

<https://orcid.org/0000-0002-0443-6851>

My Interest in Health

- Building interdisciplinary teams to develop prevention/intervention research: the effectiveness of sport participation on individual’s psychological/mental/social health (internal/external grants)
- Collaborating with scholars to test and evaluate the role of sport participation on individual and community health
- Collaborating with scholars to translate sport engagement research into societal impact
- Applying big data analytics to investigate the role of sport participation on individual and community health

Research and Projects

My primary research inquiry aims to:

- (1) examine the effectiveness of sport participation on individual’s social, psychological, and mental health outcomes from a social epidemiological perspective,
- (2) develop evidence-based interventions to promote sport participation and participants’ health and well-being
- (3) Apply big data analytics to investigate the role of sport participation on one’s health and well-being at the individual and community levels.

Recent Proposals/Publications:

- NIH
- FSU CRC PG, MDS, COFRS
- Collaborative Collision: COVID-19

Expertise/Interests

- Sport participation and mental/social health
- Social/behavioral epidemiology
- Applied statistics
- Social network analysis

How I Can Help You

- Connection to local non-profit and government organizations
- Coordinate and facilitate effective collaboration among interdisciplinary teams
- Research expertise in sport-based interventions, applied statistics, social network analysis

How You Can Help Me

- Collaborate with me to test and evaluate the effectiveness of sport participation on individual and community health
- Collaborate with me to



Meghan Mick

College of Fine Arts • Department of Interior Architecture and Design

mmick@fsu.edu

<https://www.linkedin.com/in/meghan-mick-47490416>

My Interest in Health

- How health and wellness is impacted by both the natural and built environment
- Re-establishing a more symbiotic relationship between people and nature in order to benefit health and quality of life
- Designing everyday spaces for people that contribute to mental and physical health
- I truly believe that nature is medicine – so how can that become more of a consideration in our current healthcare model

Research and Projects

- Outdoor classrooms in learning environments (K-12 and University level)
- Healing environments
- Red Dirt Discoveries <https://www.reddirtdiscoveries.org/>
- Florida Coastal Access Project (Public parks planning, design, and construction following Deepwater Horizon oil spill)

Expertise/Interests

- Design of the built environment – interior and exterior spaces
- Human relationship with the environment/nature
- Health and well-being in the built environment
- Biomimicry
- Biophilic Design
- Environmental Graphics

How I Can Help You

- Expertise in various design disciplines, including graphic design and landscape architecture
- Professional experience with multi-disciplinary teams on a number of built projects
- Curious and excited to work with other disciplines on common goals

How You Can Help Me

- First year Assistant Professor looking to create partnerships and collaborate with other disciplines for the benefit of mental and physical health
- How to assess impacts of physical environment on human health
- Experience in research and writing for publications



Fengfeng Ke

Professor, Educational Psychology and Learning Systems

<https://cyberlearningresearch.coe.fsu.edu/web/>

Expertise/Interests

- Digital game and simulation-based learning
- Mixed reality integrated learning environment design and research for neurodiverse learners/workers

My Interest in Health

- Identifying and building collaborative research teams, and positioning them to complete for external funding.
- Connecting with other individuals at FSU who are interested in the impacts of technology development and deployment in the social and mental health research and practice.

How I Can Help You

- Research experience in inclusive and adaptive learning and performance support systems.
- Grant writing and management.

How You Can Help Me

- Collaborate to develop an interdisciplinary research program on innovative and effective interventions for social and mental health.

Research and Projects



<https://cyberlearningresearch.coe.fsu.edu/web/>



Hannah Fazio

hfazio@fsu.edu

www.hannahfazio.online

My Interest in Health

- Operating at the intersections of theatre, wellness, sexuality studies, and education.
- Exploring the potential of theatre to support individual growth and social change.
- Investigating whether theatre-based, peer-to-peer sexuality education can lower instances of bullying, sexual misconduct, and sexual assault in schools.

Research and Projects

I am currently developing a project where I will work with university students to develop a sexuality education play which will be presented at universities and secondary schools.

Recent conference presentations:

- “And the Chorus Sings #MeToo: Social media responses to sexual assault”
- “Teaching after Trauma: Returning to the classroom after overwhelming events”
- Mindfulness seminars

Expertise/Interests

- Theatre
- Sexuality studies
- Arts-based research

How I Can Help You

- Community organization
- Creative programming
- Yoga and meditation classes
- Social media

How You Can Help Me

- Interdisciplinary collaboration
- Connections to local nonprofits and schools
- Connection to project funding



Gregg Stanwood

Department of Biomedical Sciences
gregg.stanwood@med.fsu.edu

My Interest in Health

- Focus on neurological, neurodevelopmental, and psychiatric disorders, but also important comorbid medical conditions (metabolic disorders, sleep, cardiovascular factors, etc)
- Interested in contributing to multidisciplinary teams to conjointly address biological, behavioral and social influences to medicine and health. Potential impact is important and that is served best in community.

Research and Projects

- 1) Neurodevelopmental risk factors for later emergence of mental health disorders and their treatment.
- 2) Neural modulation and circuits contributing to disorders of cognition, reward, and emotion.
- 3) Biobehavioral and social strategies to identify individuals at risk and to address health and well-being amongst individuals and families.

Expertise/Interests

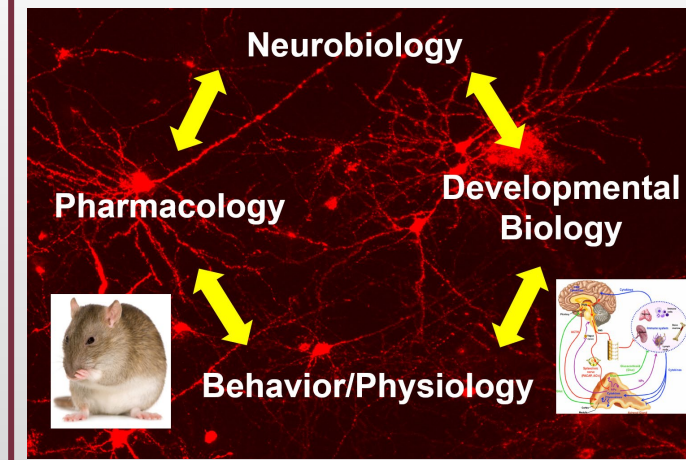
- Neuroscience
- Pharmacology / Drug Discovery
- Translational Research
- Animal Models
- Biomarkers

How I Can Help You

- Neurobehavioral characterization of rodent models of disease
- Lab-based cellular, biochemical, molecular and anatomical assays
- Monitoring of neuroendocrine, inflammatory and exogenous markers in saliva, blood and urine samples

How You Can Help Me

- Help identify new biological and behavioral targets for intervention.





**Geneva Scott-King
DNP-MSN-FNP-C
and Sabrina L.
Dickey PhD,
MSN, RN**

Specialized Faculty II, Assistant Professor

My Interest in Health

- Cancer Health Disparity Research among Underserved Populations.
- Intersectionality of Family Relations, Screenings, and Healthy Behaviors.
- Exploring the relation of health communication within families and their health care utilization.
- Collaborating with interdisciplinary researchers to examine cultural implications on health care access and utilization among marginalized populations.

Research and Projects

- Examination of COVID-19 vaccination among underserved populations.
- Project that examines Florida healthcare providers' perception of social support provided to patients and college students' utilization of health care services.
- Collaboration with Bond Community Health Center to assess colorectal cancer screening with the outcome of developing a communication toolkit to increase colorectal cancer screening.

Expertise/Interests

- Family Nurse Practitioner certified > 18 years
- Registered Nurse > 25 years
- Women and College Health issues
- Instrument development

How I Can Help You

- Clinical skills as a family nurse practitioner.
- Clinical skills as a registered nurse.
- History of collaborations with community clinics and community health experience.
- Mixed methods research
- Experience with instrument development

How You Can Help Me

- Interdisciplinary methodologies and designs.
- Interventions for working with underrepresented groups.
- New collaborations with organizations in the community.
- Access to data sets.



Joseph Schwartz

College of Criminology and Criminal Justice
jaschwartz@fsu.edu
<https://orcid.org/0000-0001-5777-0573>

My Interest in Health

- Long-term health implications of criminal justice contact
- Short- and long-term physiological impact of inequality
- Healthcare within correctional settings
- Health implications for criminal justice practitioners
- Long-term health implications of trauma exposure
- Collection, processing, and analysis of biomarkers related to stress and health
- Biological aging

Research and Projects

Physiological and Psychological Responses to Critical Incidents among Correctional Officers (NIJ 2017-R2-CX-0032)



Long-term physical health consequences of perceived inequality: Results from a twin comparison design



Expertise/Interests

- Health in the Criminal Justice System
- Stress and Health
- Biosocial influences/ processes on behavior
- Traumatic brain injury

How I Can Help You

- Fostering partnerships with criminal justice agencies across the state
- Extensive experience collecting, storing, and analyzing salivary biomarkers
- Experience with longitudinal statistical analysis and within-family research designs

How You Can Help Me

- Currently developing an interdisciplinary research team focused on examining health outcomes within the criminal justice system and following criminal justice contact
- Potential mentor for future NIH K01 application

A Longitudinal Assessment of Head Injuries as a Source of Acquired Neuropsychological Deficits and the Implications for Criminal Persistence[





Monica K. Hurdal

Professor

Department of Mathematics

mhurdal@math.fsu.edu

www.math.fsu.edu/~mhurdal

Expertise/Interests

- Mathematical Modeling
- Computer Simulations
- MRI, EEG Brain Data
- Brain Mapping, Anatomy, Development, Function
- Computational Anatomy

My Interest in Health

- Develop computational, mathematical, biomechanical models and modeling tools for medicine and biology.
- Neuroinformatic tools for improved understanding, analysis, localization and visualization of brain development, anatomy, function, disease, aging.
- Pattern formation, development and diffusion models in biology and medicine within and across species.
- Develop software, apply novel mathematical methods.
- Form interdisciplinary collaborations where health related questions drive the mathematical models, which in turn, produce results that drive the research questions.

How I Can Help You

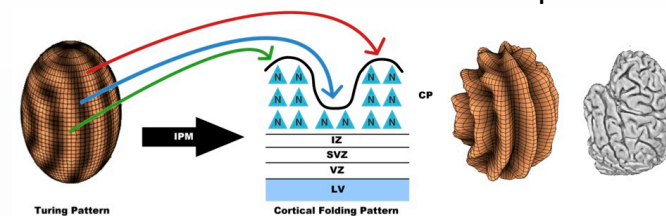
- Data analysis and visualization
- Develop mathematical and computational models
- Neuroinformatic tools for analysis, localization and visualization of anatomical and functional brain data
- Create flat maps of cortical surfaces

How You Can Help Me

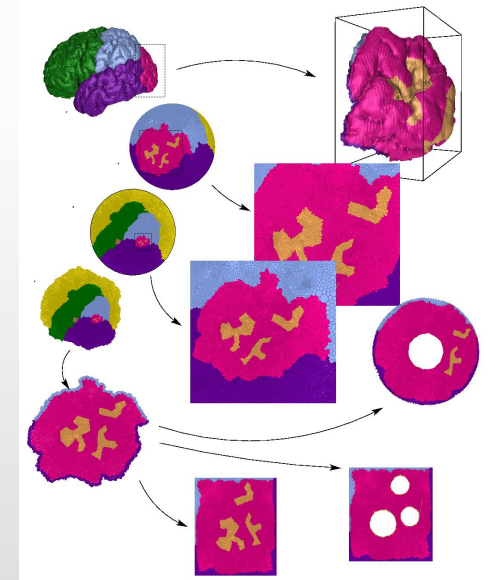
- Form interdisciplinary collaborations
- Share data
- Ask medical or health related questions that can benefit from mathematical modeling and simulations
- Consult on health, biological, medical details to improve models

Research and Projects

Reaction-diffusion models of brain development and cortical folding pattern formation in humans and across species.



Cortical surface reconstructions and “flat” maps of the brain to characterize brain shape and function.



Data visualization and spatial and temporal differential equation models.

Up Next: Barbara Parker-Bell



Barbara Parker-Bell

Associate Professor, Director of Art Therapy
Department of Art Ed., CFA
bparkerbell@fsu.edu
<https://arted.fsu.edu/barbara-parker-bell/>

My Interest in Health

- Overall Focus: Promoting Health and Wellness Youth-Adults
- Museum and art therapy programs’ collaborative roles in supporting community member well-being
- Exploration of resilience in youth through art therapy interventions
- Sustaining positive engagement and preventing burnout in mental health and medical students and health care professionals
- Utilizing creative arts interventions to support career decision making and positive career outcomes

Research and Projects

Upcoming Grant “Learning from COVID 19 Experiences” Peer to Peer Program; Eurasia Foundation/US Embassy Moscow with Russian National Art Therapy Association, April 2021- March 2022

“Exploring and Supporting Art Therapy Development in the Russian Federation,” US Scholar Fulbright Teaching/Research Award 2016-7; Collaborative Survey Research

Expertise/Interests

- Art Therapy & Clinical Psychology-CBT- Health Psych.
- Cross-disciplinary engagement with art, medical museum, psychology, career focused disciplines
- Practice of art therapy and

How I Can Help You

- Creativity: many years of clinical experience with creative mental health interventions and a variety of populations
- Interdisciplinary arts and health care interests and experience
- Experience with qualitative research methods

How You Can Help Me

- Interest in interdisciplinary collaborative research
- Knowledge of resilience measures
- Knowledge of and research experience with career development
- Established community connections



All Research Profiles Available at:
[research.fsu.edu/Collaborative Collision](https://research.fsu.edu/Collaborative%20Collision)

Up Next: Eren Erman Ozguven



Eren Erman Ozguven

[Civil and Environmental Engineering
eozen@eng.famu.fsu.edu](mailto:eozen@eng.famu.fsu.edu)

My Interest in Health

- I am interested in the resilience of our communities, especially those that are underserved, against disasters such as hurricanes and pandemics.
- Given that the extreme weather events are affecting our communities disproportionately, there is a need to develop approaches that help bridge the gap in achieving resilience with a focus on issues related to infrastructure, environment, governments, and people.
- I am open to collaborations with faculty from other disciplines in the context of community resilience.

Research and Projects

I am involved in several projects focusing on the disaster resilience. Examples include:

NSF CoPe RCN: Resilient Rural Infrastructure

The RCN for Resilient Rural Infrastructure will explore and achieve adaptive capacity and resilience for Gulf coastal communities, which has the potential to extend to infrastructure resilience of other rural communities in the United States.

NSF SCC-CIVIC-PG Track B: Rural Resiliency Hubs: A Planning Approach to Addressing the Resiliency Divide

This project will explore the interactions between community actors, population needs, environment, information, and infrastructure foster disaster resilience in rural communities and how disaster resilience can be achieved by using rural libraries as resiliency hubs for natural disaster response.

NSF Excellence in Research: Integrated Hazard and Traffic Modeling for Massive Evacuation in Florida Under Uncertainty of Hurricane Track

This project integrates coastal hazard modeling with comprehensive evacuation modeling while considering the uncertainty of hurricane tracks.

Expertise/Interests

- Emergency Evacuations
- Infrastructure Resilience
- Resilient Communities
- Traffic Engineering
- Accessibility

How I Can Help You

- Traffic Simulation
- Network Modeling
- Evacuations
- Sheltering
- Infrastructure Resilience

How You Can Help Me

- Community Impact
- Public Policy and Planning
- Psychological and Sociological Impacts
- Human Factors



Scott M. Pickett

Behavioral Sciences and Social Medicine
Center for Translational Behavioral
Science

scott.pickett@med.fsu.edu

My Interest in Health

- Mental health outcomes associated with trauma-related sleep disruption
- Stress, traumatic stress, and sleep disruption as a risk factors for obesity risk
- Adaptive emotion regulation as a protective factor for mental and physical health
- Mindfulness- and skills-based interventions for cultivating adaptive emotion regulation
- Improving accessibility and acceptability of interventions
- Adapting interventions for specific populations

Research and Projects

Ongoing:

- **Project SOLAR** – evaluate a community delivered intervention for natural disaster trauma
- **Project BioSleep** – pilot study to examine neuroendocrine profiles associated with various sleep patterns
- **Sleep +** – pilot study to evaluate a brief, online mindfulness intervention to reduce stress and improve sleep

Expertise/Interests

Psychological Trauma
Sleep disruption
Emotion regulation
Mindfulness
Obesity risk

How I Can Help You

- Mixed-methods design
- Clinical trials experience
- Training in psychotherapy interventions for trauma exposure and traumatic stress
- Psychological trauma, sleep, and emotion regulation expertise

How You Can Help Me

- Innovative methods/designs for naturalistic, observational studies
- Integration of mixed-methods into research designs
- Panhandle community connections
- Expertise in other types of stressful and traumatic events

Future:

- Examine race-related stress/trauma and the impact on sleep disruption and physical health outcomes
- Adapt SOLAR for other community-based trauma (i.e., COVID, race- and gender identity- related traumas)



Lucinda J. Graven

PhD, APRN, FAHA; Associate Professor
FSU College of Nursing
Courtesy FSU COM Dept Behavioral
Science & Social Medicine

My Interest in Health

- Factors related to adverse outcomes in heart failure patients and their family caregivers.
- Problem-solving and coping interventions to improve outcomes in patients with chronic disease.
- Development and testing of interventions for caregivers of chronically ill patients to enhance quality of life outcomes.
- Telehealth intervention for rural and urban patients & caregivers to promote health and mental well-being.

Research and Projects

- **Current Project:**
 - Developing and testing a problem-solving intervention for rural heart failure dyads (patient/family caregiver)
- **Completed Projects:**
 - Descriptive research identifying factors associated with adverse outcomes in heart failure caregivers
 - Development and testing of a coping intervention for depressive symptoms in heart failure patients
 - Descriptive research identifying factors associated with self-care and depression in heart failure patients
- **Collaborative Projects:**
 - Identification of heart failure symptoms associated with depression
 - Cardiovascular health promotion interventions

Expertise/Interests

- Chronic Disease Management
- Heart Failure Science
- Coping with Chronic Disease
- Patient & Caregiver Reported Outcomes (PROs)
- Telehealth & Cognitive-Behavioral Interventions

How I Can Help You

- Licensed Advanced Practice Nurse (FNP)
- Collaborate on projects and grants involving individuals with chronic illness and/or their caregivers
- Design and methodology for studies involving PROs
- Experience with rural and community-based research

How You Can Help Me

- Collaborate on interdisciplinary external grants
- Statistical expertise (Cox regression hazard ratio, intervention cost analyses)
- Looking for collaborator who speaks Spanish and has access to Hispanic communities



Patrick F. Merle - pmerle@fsu.edu

My Interest in Health

- Impact of COVID19 on faculty's enjoyment/job satisfaction
- How being resilient during COVID19 can be treated as a strength for students seeking employment?
- The rise of e-sports as physical alternatives
- How a pandemic affects how we view our food consumptions (healthy options first?)
- Best communication methods about health protocols/precautions for tourism industry

Research and Projects

- No new projects on health

Expertise/Interests

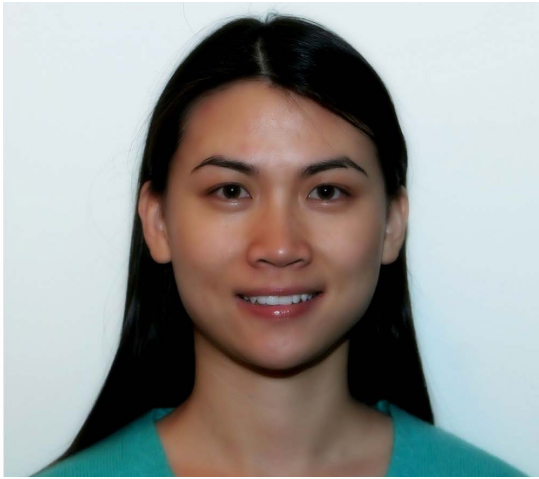
- Crisis Communication
- Risk Communication
- Public Relations Campaigns
- International media

How I Can Help You

- Integration of crisis/strategic communication in your study
- Western European comparative perspectives

How You Can Help Me

- Co-authorship
- Grant involvement



Hongyuan Cao

Associate Professor of Statistics
hcao@fsu.edu
orcid.org/0000-0001-5752-732X

My Interest in Health

- I have consulted and collaborated extensively with epidemiologist and clinicians on study design, statistical modeling, data analysis, manuscript preparation and grant proposal writing.
- The disease outcomes I have been working on include breast cancer, head and neck cancer, urothelial cancer, cardiovascular disease, and kidney disease, among others.
- I am particularly interested in Alzheimer’s disease, dementia and psychiatric disorders.

Research and Projects

- Study clinical risk factors that affect the duration of hospital study for COVID19 patients
- Longitudinal biomarkers analysis in HIV/AIDS study
- Integrative analysis of multiple omics data to improve detection accuracy in genome wide association studies
- Identify micro-RNA that can differentiate expressed genes between ovarian cancer and endometrial cancer
- Experimental design for causal inference analysis with time to event outcome
- Statistical design and sample size calculation for dose response analysis in toxicology

Expertise/Interests

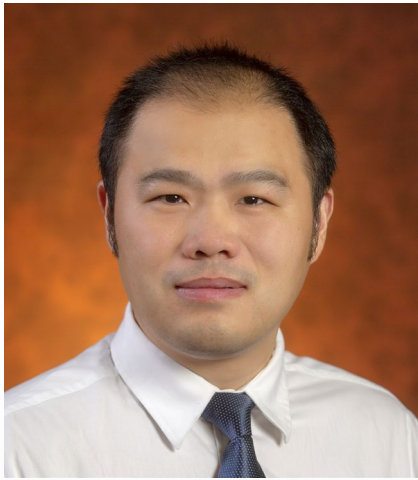
- Longitudinal data analysis
- Survival analysis
- High throughput biological data analysis in genetics
- Causal inference

How I Can Help You

- Interdisciplinary approach to scientific problems
- Statistical modeling
- Data analysis
- Treatment effect estimation
- Apply state-of-the-art statistical methods to applied problems

How You Can Help Me

- Access to populations/dataset
- Domain knowledge of the scientific problem
- Different perspectives on the problem
- Explore challenges in the field



Chao Huang

Department of Statistics
chuang7@fsu.edu

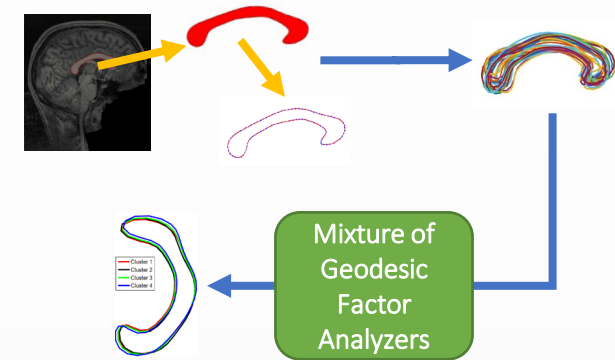
orcid.org/0000-0002-1157-4291

My Interest in Health

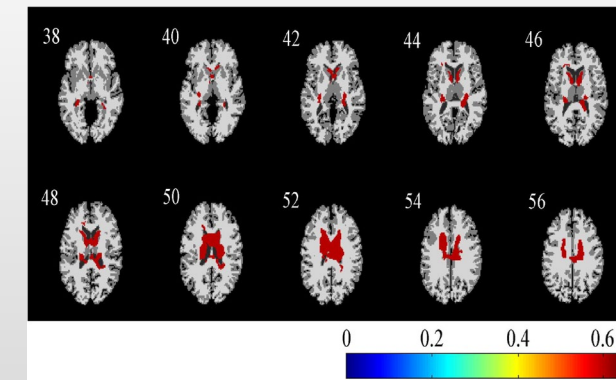
My research interests mainly focus on statistical learning of biomedical data including **clinical**, **imaging**, and **genomic** data in large-scale mental health studies. These statistical methods and computational tools can help understand the disease progression and improve clinical trials for the treatment and early prevention.

Research and Projects

❖ Attention deficit hyperactivity disorder (ADHD) subgroup detection



❖ Alzheimer's Disease (AD)



Expertise/Interests

- Medical Image Data Analysis
- Imaging Genetics
- Big Data Integration
- Machine Learning

How I Can Help You

- Statistical Consulting
- Advanced Statistical Modeling
- Data Mining via Machine Learning & Deep Learning
- Experience publishing in top journals

How You Can Help Me

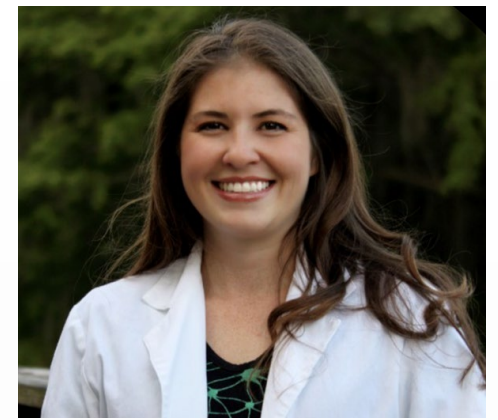
- Access to populations/dataset
- Explore challenges in the field
- Interdisciplinary approaches



Krissy Capitano, RN, BSN
Clinical Research Navigator
Office for Clinical Research
Advancement (OCRA)

How OCRA Can Help

- OCRA provides services to all FSU researchers conducting human subjects research
- Contact OCRA for one-on-one research consultations
<https://ocra.fsu.edu/consultations/>
- Assist with study design/development pre-IRB submission to help address potential regulatory/compliance concerns like the approach, interventions, use of regulated products, statistical methods, design issues, record-keeping, required reporting or recruiting/consenting subjects.
- Assist FSU researchers to identify clinical collaborators and community research resources
- Provide informational workshops, seminars and other knowledge-building opportunities



Marissa Ciesla, Ph.D.

TMH/FSU Research Coordinator

- TMH and FSU have partnered up to facilitate research collaborations!
- Interested in collaborating with TMH? Contact OCRA: ocra@fsu.edu
- Assistance in identifying TMH clinical collaborators, resources, participant recruitment, and navigating the TMH IRB process.

WHO CAN COLLABORATE?

- Faculty, Staff, Post-Doctoral Fellows & Medical Residents
- Graduate, Medical, & Undergraduate Students

Expertise/Interests

- Clinical Research
- Clinical Trials
- Community Engagement
- Community Collaborators

TMH Clinical Areas Active in Research

- Cardiology
- Metabolics
- Neurology
- Oncology
- Internal Medicine
- Surgery

Active FSU/TMH Research Collaborations

- College of Medicine
- Internal Medicine & General Surgery Residencies
- College of Nursing
- College of Human Sciences
- College of Business

Les Beitsch

Dept of Behavioral Sciences and Social
Medicine
College of Medicine
les.beitsch@med.fsu.edu

My Interest in Health

- Developing **LIFECYCLES** (Long-term Integrated FL Expanded Comprehensive & Collaborative Learning Enhancement System) as a Big Health Data project that recognizes a critical and urgent need to establish an integrated data repository for examination of Florida's health and social services and researching what constitutes optimal investments, policy, and strategy for maximizing client outcomes.
- Improving health outcomes for underserved populations
- Advancing the quality and performance of health services
- Increasing knowledge about social determinants of health in order to advance impactful interventions

Research and Projects

- **LIFECYCLES** project
- De-identified longitudinal dataset of FL Dept. of Children & Fam (DCF) clients
- **Planned queryable dataset for researcher access**
- Data for all DCF services received
- Focus on relationship of services and outcomes with mental health crisis

Expertise/Interests

- Public health
- Public health services research
- Public health practice

How I Can Help You

- LIFECYCLES team would like to make the DCF database available to other interested researchers across the FSU campus exploring similar questions:
- 1. Are there differences between DCF clients experiencing mental health/substance abuse crises compared to others?

How You Can Help Me

- 2. What characteristics and risk factors are related to successful outcomes for DCF clients experiencing crises?
- 3. Who are the high utilizers of DCF services? How do their outcomes compare with other DCF clients?



Nicki W. Taylor, Ph.D.

FSU College of Medicine
Behavioral Sciences & Social Medicine
nicki.taylor@med.fsu.edu

My Interest in Health

- Background in Counseling Psychology and School Psychology – dedicated to the overall mental health, well-being, and academic skills support of graduate students
 - Relationship among academics and mental health
 - History of psychological and psychoeducational assessment
- Networking and learning more about mental health and well-being research university-wide

Research and Projects

- Mental Health and Well-Being of CoM students enrolled in M.D. or P.A. programs
- Outcomes of skills training for academic strategies and anxiety reduction
- Stigma of mental health help-seeking among medical students and residents

Expertise/Interests

- Licensed Psychologist
- Mental Health and Academic Skills Support

How I Can Help You

- Participate in research projects/collaborations regarding health sciences students – mental health, well-being, academic support.
- Guest speaker in classes

How You Can Help Me

- Explore mental health and well-being of students within the health sciences
- Interested in wellness programming for students



Psychological Services.
Academic Assistance.
Enhancement of Well-Being.



Adam Baptiste M.D.

Department of Behavioral Sciences & Social Medicine FSUCOM
Adam.Baptiste@med.fsu.edu

My Interest in Health

- Psychological/social interventions for depression in women around the time of childbearing; substance use disorders; maternal-child mental health
- Rooted in justice and equity, my interest in health is aimed at correcting disparities for the groups that experience them greatest
- My efforts are for the work I engage to contribute to policy change not only locally, but also at state, national, and international levels
- Viewing health as the true wealth of life

Research and Projects

<https://flbhimpact.org/>

- Funded by HRSA The Florida BH IMPACT Program is an innovative initiative by the Florida Department of Health (DOH), the Florida State University (FSU) College of Medicine and the Florida Maternal Mental Health Collaborative (FLMMHC). The program aims to promote maternal and child health by building the capacity of health care providers to address these critical issues through professional development, expert consultation and support, and dissemination of best practices. The program also supports expanded screening for: depression, anxiety, and substance use; and access to needed services for prenatal, pregnant, and postpartum women.

Expertise/Interests

- Physician | Researcher | Coordinator
- Perinatal Mental Health
- Pediatric Behavioral Health
- Perinatal Health Equity

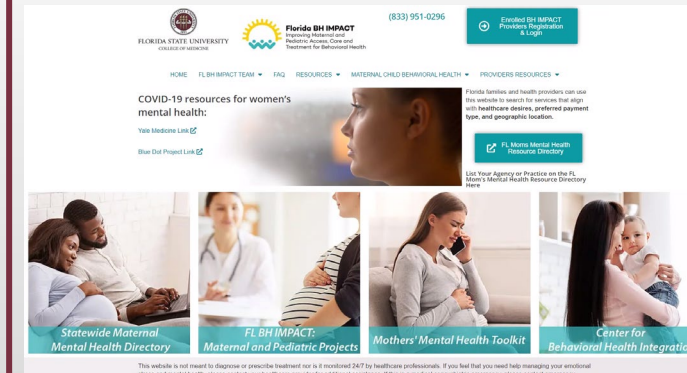
How I Can Help You

- CEU/CME event that can be educational or instructional on various topics i.e. Motivational Interviewing, IPT, Pediatric Anxiety, Substance Use Disorder, etc.
- Research experience in Health Literacy, Perinatal Mental Health, and Pediatric Behavioral Health

How You Can Help Me

- Collaborate on community initiatives to address Pediatric Behavioral Health & Maternal Mental Health
- Share awareness/advertise our program to providers and patients

Website Screenshot



Up Next: Beth Hodges (Final)

All Research Profiles Available at:
[research.fsu.edu/Collaborative Collision](https://research.fsu.edu/Collaborative%20Collision)



**Christine McCauley
Ohannessian**

Family & Child Sciences
cohannessian@fsu.edu

My Interest in Health

- Connecting with others at FSU who are interested in behavioral health, especially
 - Internalizing disorders (depression, anxiety) during adolescence and emerging adulthood
 - Substance abuse during adolescence and emerging adulthood
 - Social media use and behavioral health
 - Broadly Interested in
 - Gender differences
 - Developmental trajectories
 - Resilience and addressing the question why some youth from maladaptive environments turn out to be well adjusted, whereas others do not

Research and Projects

- **Adolescent Adjustment Project**
(adolescentadjustmentproject.org)
- **PANDA Project**
(pandaresearchproject.org)
- **BALANCE Project**
(balanceresearchproject.org)

Expertise/Interests

- Longitudinal Research Methods
- Developmental Psychopathology Perspective focused on Adolescents and Emerging Adults
- Survey Research

How I Can Help You

- Experience with long-term longitudinal research projects
- Knowledge of advanced statistics
- Interested in interdisciplinary and collaborative research – I love to collaborate with others!

How You Can Help Me

- Being new to FSU, I would love to find collaborators with similar interests!
- Looking for others who are especially interested in social media use





OFFICE OF RESEARCH DEVELOPMENT



Website: ORD.FSU.EDU

Email: ORD@FSU.EDU

- Proposal management for large, multidisciplinary efforts
- Funding opportunity identification
- Collaborator Identification Events & Services
- Professional Development (workshops, resources, funding training module coming soon)
- Examples of successful proposals
- Proposal Editing
- Limited Submissions Oversight
- The Council on Research & Creativity management
- Early-Career Grants Strategy

COLLABORATIVE COLLISION @FSU



Thank You!

Evangeline Ciupek, ORD

Beth Hodges, ORD

Rachel Goff-Albritton, ORD

Grace Adkison, ORD

Jonathan Nurse, FSU Federal Relations

Bill Wellock, Research Communications

Kathleen Haughney, Research Communications

Council of Associate Deans for Research